



Now that you know how a battery works and the benefits of a battery system service, the following lesson will show you how to perform a battery replacement service.

By the time you complete the lesson, you should be able to:

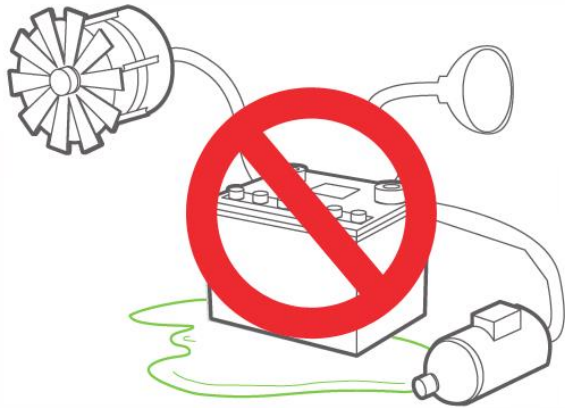
- ↘ Recall the steps to perform a battery replacement service



CLICK NEXT TO CONTINUE.



Do NOT replace the battery if it shows any signs of leaking.

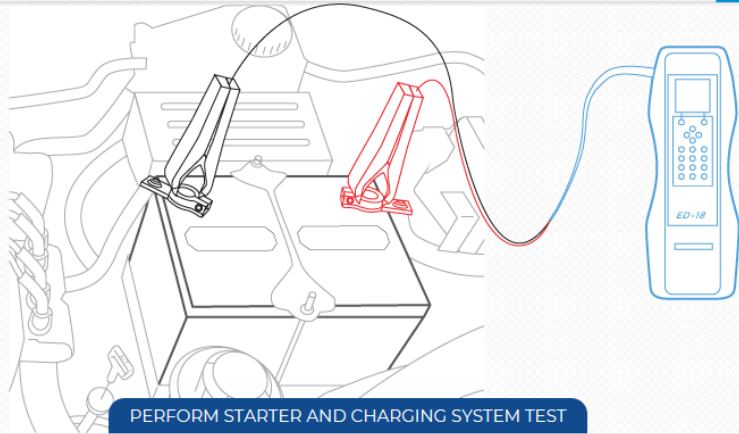


CAUTION

- 1 2 3 4 5 6 7 8 9 10 11 12 13 14 15 16 17 18 19 20 21 22 23 24 25
- 26 27 28 29 30 31 32

Put on required PPE.

All callouts must be loud and clear.

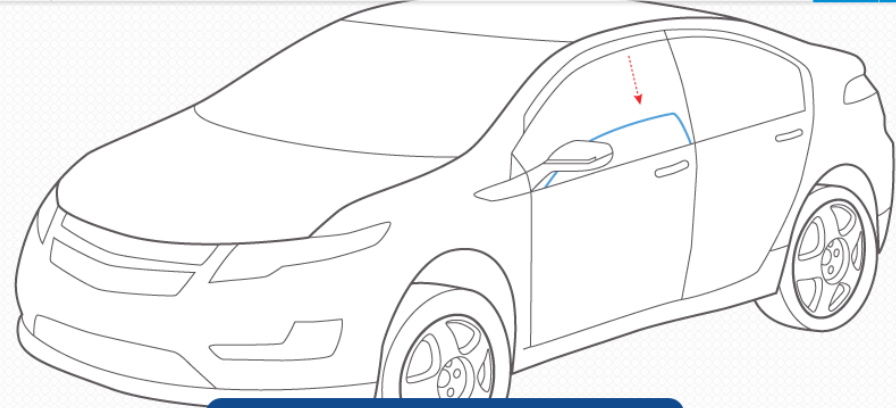


PERFORM STARTER AND CHARGING SYSTEM TEST

- 1
- 2
- 3
- 4
- 5
- 6
- 7
- 8
- 9
- 10
- 11
- 12
- 13
- 14
- 15
- 16
- 17
- 18
- 19
- 20
- 21
- 22
- 23
- 24
- 25
- 26
- 27
- 28
- 29
- 30
- 31
- 32

STEP 2:

Retest the battery and perform a system test.

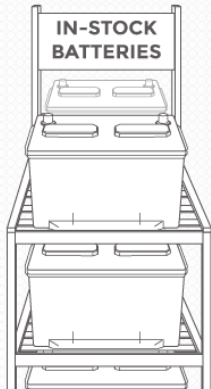


PERFORM STARTER AND CHARGING SYSTEM TEST

- 1
- 2
- 3
- 4
- 5
- 6
- 7
- 8
- 9
- 10
- 11
- 12
- 13
- 14
- 15
- 16
- 17
- 18
- 19
- 20
- 21
- 22
- 23
- 24
- 25
- 26
- 27
- 28
- 29
- 30
- 31
- 32

STEP 1:

Ensure driver's side window is open.



PERFORM BATTERY REPLACEMENT

- 1 2 3 4 5 6 7 8 9 10 11 12 13 14 15 16 17 18 19 20 21 22 23 24 25
- 26 27 28 29 30 31 32

STEP 3:

Verify that the proper battery is in stock.



PERFORM BATTERY REPLACEMENT

- 1 2 3 4 5 6 7 8 9 10 11 12 13 14 15 16 17 18 19 20 21 22 23 24 25
- 26 27 28 29 30 31 32

STEP 3:

Verify that the proper battery is in stock.

REQUIRED: Safety glasses, safety goggles, and PVC gloves. Gloves must be worn until the battery terminals are secure.



CALL OUT:

Battery
Service, Bay _!

PERFORM BATTERY REPLACEMENT

1 2 3 4 5 6 7 8 9 10 11 12 13 14 15 16 17 18 19 20 21 22 23 24 25
26 27 28 29 30 31 32

STEP 4:

CALL OUT: "Battery Service, Bay ____!"

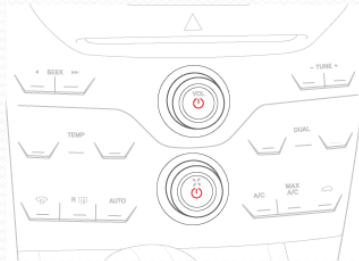
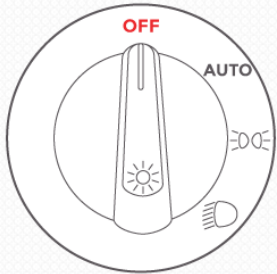


PERFORM BATTERY REPLACEMENT

1 2 3 4 5 6 7 8 9 10 11 12 13 14 15 16 17 18 19 20 21 22 23 24 25
26 27 28 29 30 31 32

STEP 5:

Use only approved battery tools throughout the service.

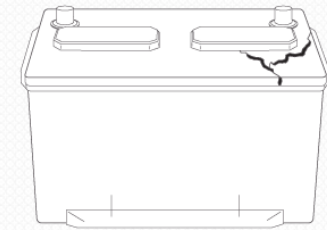
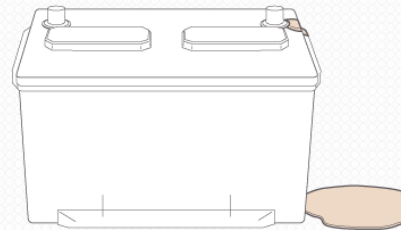


PERFORM BATTERY REPLACEMENT

- 1 2 3 4 5 6 7 8 9 10 11 12 13 14 15 16 17 18 19 20 21 22 23 24 25
- 26 27 28 29 30 31 32

STEP 6:

Verify that all battery loads are OFF.



PERFORM BATTERY REPLACEMENT

- 1 2 3 4 5 6 7 8 9 10 11 12 13 14 15 16 17 18 19 20 21 22 23 24 25
- 26 27 28 29 30 31 32

STEP 7:

Inspect condition of battery terminals and hold down.



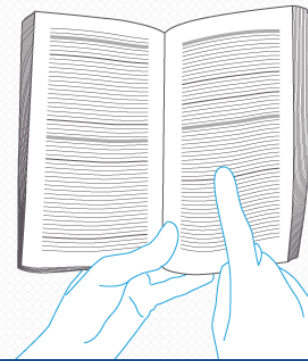
PERFORM BATTERY REPLACEMENT

- 1 2 3 4 5 6 7 8 9 10 11 12 13 14 15 16 17 18 19 20 21 22 23 24 25
- 26 27 28 29 30 31 32

STEP 7:

Inspect condition of battery terminals and hold down.

DO NOT change the battery if there are leaks.

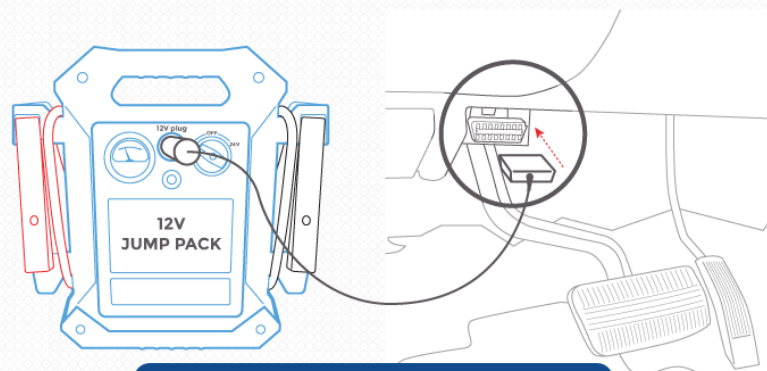


PERFORM BATTERY REPLACEMENT

- 1 2 3 4 5 6 7 8 9 10 11 12 13 14 15 16 17 18 19 20 21 22 23 24 25
- 26 27 28 29 30 31 32

STEP 8:

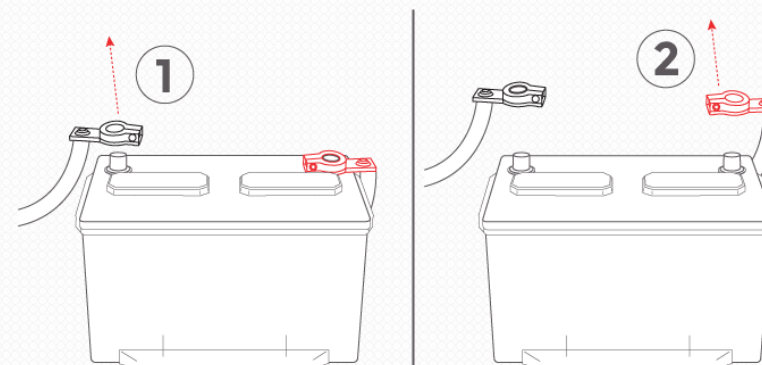
Determine type of battery.



PERFORM BATTERY REPLACEMENT

- 1 2 3 4 5 6 7 8 9 10 11 12 13 14 15 16 17 18 19 20 21 22 23 24 25
- 26 27 28 29 30 31 32

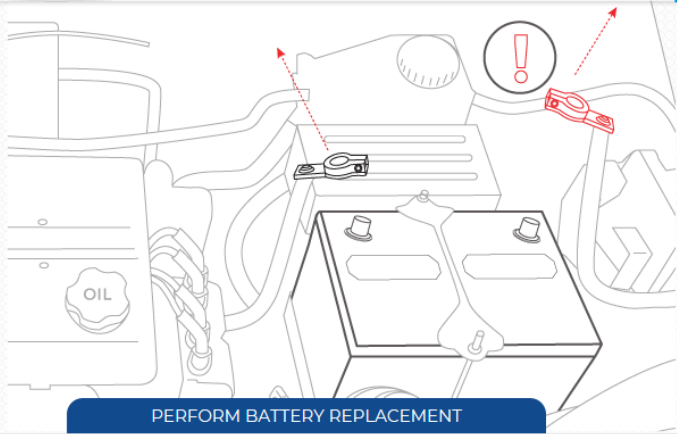
STEP 9:
Install the memory saver.



PERFORM BATTERY REPLACEMENT

- 1 2 3 4 5 6 7 8 9 10 11 12 13 14 15 16 17 18 19 20 21 22 23 24 25
- 26 27 28 29 30 31 32

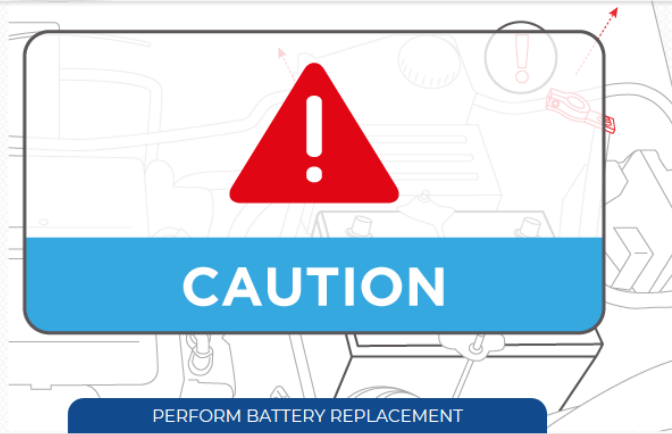
STEP 10:
Remove battery terminals - REMOVE NEGATIVE TERMINAL FIRST.



- 1 2 3 4 5 6 7 8 9 10 11 12 13 14 15 16 17 18 19 20 21 22 23 24 25
- 26 27 28 29 30 31 32

STEP 11:

Move the battery cables away from battery to allow for clearance to remove the battery.

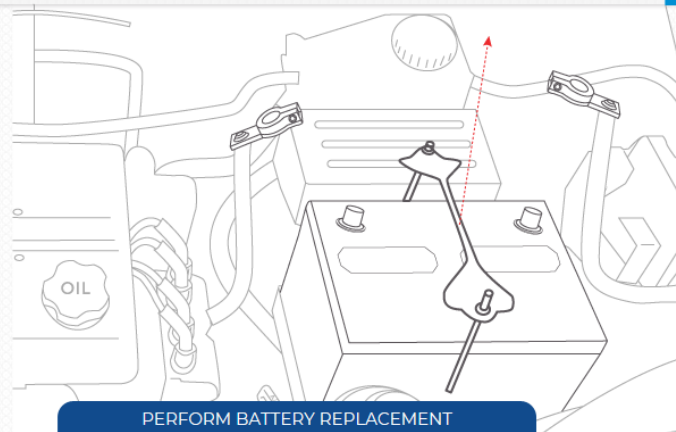


- 1 2 3 4 5 6 7 8 9 10 11 12 13 14 15 16 17 18 19 20 21 22 23 24 25
- 26 27 28 29 30 31 32

STEP 11:

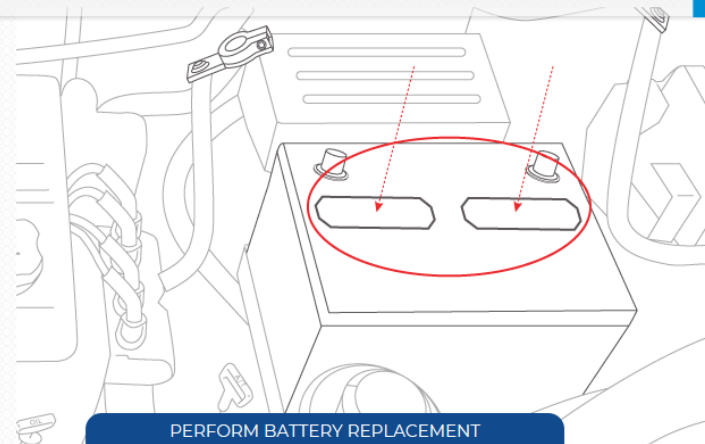
Move the battery cables away from battery to allow for clearance to remove the battery.

Do not ground positive terminal.



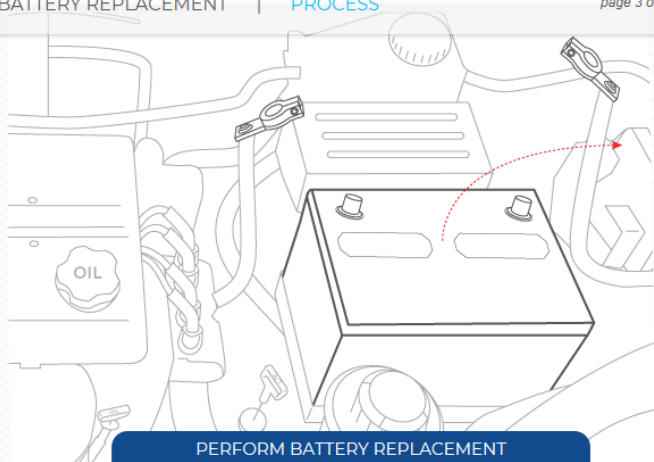
- 1 2 3 4 5 6 7 8 9 10 11 12 13 14 15 16 17 18 19 20 21 22 23 24 25
- 26 27 28 29 30 31 32

STEP 12:
Remove the battery hold down.



- 1 2 3 4 5 6 7 8 9 10 11 12 13 14 15 16 17 18 19 20 21 22 23 24 25
- 26 27 28 29 30 31 32

STEP 13:
Ensure the battery caps are firmly seated.



PERFORM BATTERY REPLACEMENT

- 1 2 3 4 5 6 7 8 9 10 11 12 13 14 15 16 17 18 19 20 21 22 23 24 25
- 26 27 28 29 30 31 32

STEP 14:

Remove the battery from vehicle being careful not to tip or drop the battery.



CALL OUT:

Clear for battery cleaning, Bay _!

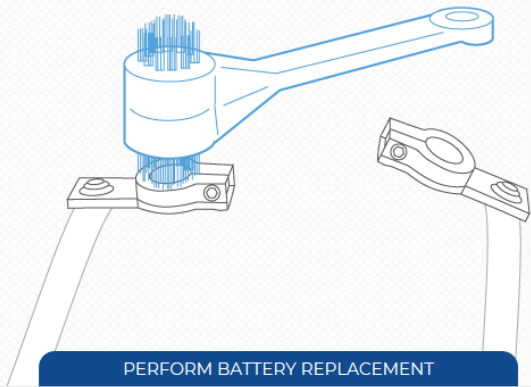


PERFORM BATTERY REPLACEMENT

- 1 2 3 4 5 6 7 8 9 10 11 12 13 14 15 16 17 18 19 20 21 22 23 24 25
- 26 27 28 29 30 31 32

STEP 15:

CALL OUT: "Clear for battery cleaning, Bay ____!"

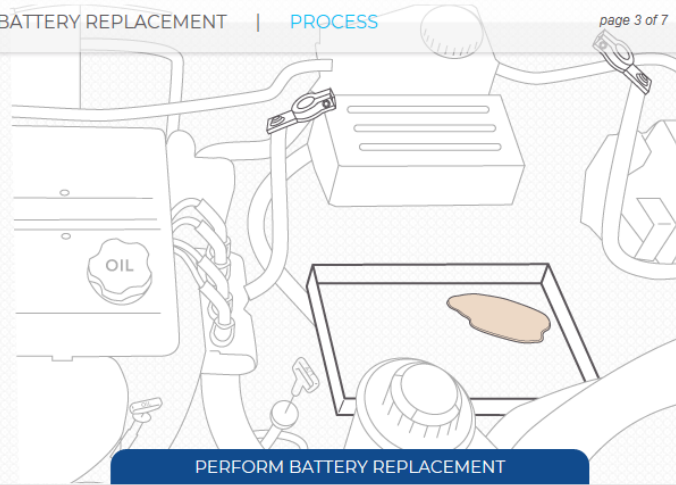


PERFORM BATTERY REPLACEMENT

- 1 2 3 4 5 6 7 8 9 10 11 12 13 14 15 16 17 18 19 20 21 22 23 24 25
- 26 27 28 29 30 31 32

STEP 16:

Clean the terminals with the proper battery brush.



PERFORM BATTERY REPLACEMENT

- 1 2 3 4 5 6 7 8 9 10 11 12 13 14 15 16 17 18 19 20 21 22 23 24 25
- 26 27 28 29 30 31 32

STEP 17:

Clean the battery box if necessary.



CALL OUT:

Clear for battery cleaning, Bay _!



PERFORM BATTERY REPLACEMENT

- 1
- 2
- 3
- 4
- 5
- 6
- 7
- 8
- 9
- 10
- 11
- 12
- 13
- 14
- 15
- 16
- 17
- 18
- 19
- 20
- 21
- 22
- 23
- 24
- 25

- 26
- 27
- 28
- 29
- 30
- 31
- 32

STEP 18:

CALL OUT: "Clear for battery cleaning, Bay ____!"



MEGA-TRON II

INTERSTATE BATTERIES

Example shown here is April 2015

- 1
- 2
- 3
- 4
-
- 6
- 7
- 8
- 9
- 0
- JA
- FB
- MR
-
- MA
- JU
- JY
- AG
- SP
- OT
- NV
- DC



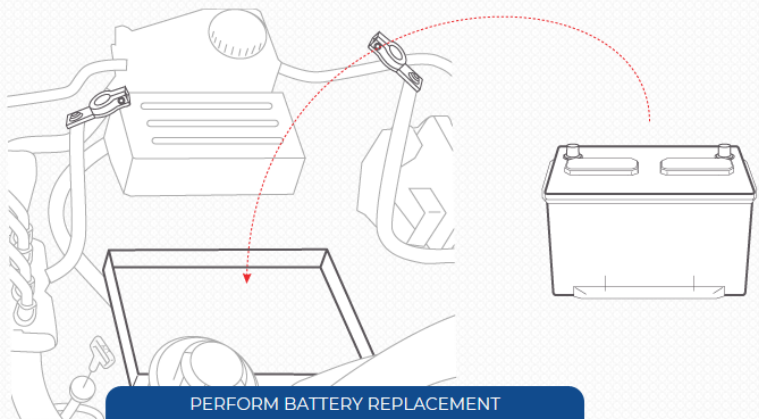
PERFORM BATTERY REPLACEMENT

- 1
- 2
- 3
- 4
- 5
- 6
- 7
- 8
- 9
- 10
- 11
- 12
- 13
- 14
- 15
- 16
- 17
- 18
- 19
- 20
- 21
- 22
- 23
- 24
- 25

- 26
- 27
- 28
- 29
- 30
- 31
- 32

STEP 19:

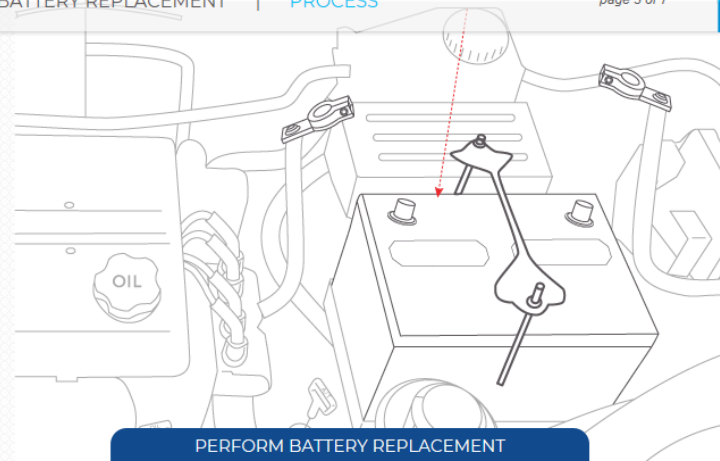
Punch the date code label with the current month and year.



- 1 2 3 4 5 6 7 8 9 10 11 12 13 14 15 16 17 18 19 20 21 22 23 24 25
- 26 27 28 29 30 31 32

STEP 20:

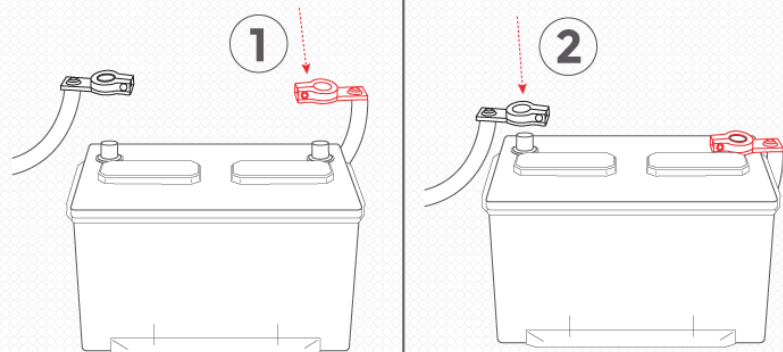
Install the new battery into the vehicle being careful not to tip or drop the battery.



- 1 2 3 4 5 6 7 8 9 10 11 12 13 14 15 16 17 18 19 20 21 22 23 24 25
- 26 27 28 29 30 31 32

STEP 21:

Install the battery hold down.

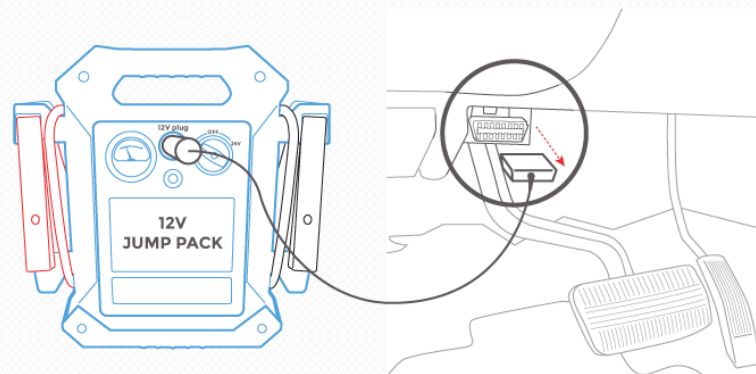


PERFORM BATTERY REPLACEMENT

- 1 2 3 4 5 6 7 8 9 10 11 12 13 14 15 16 17 18 19 20 21 22 23 24 25
- 26 27 28 29 30 31 32

STEP 22:

Install the battery terminals, **POSITIVE FIRST**.

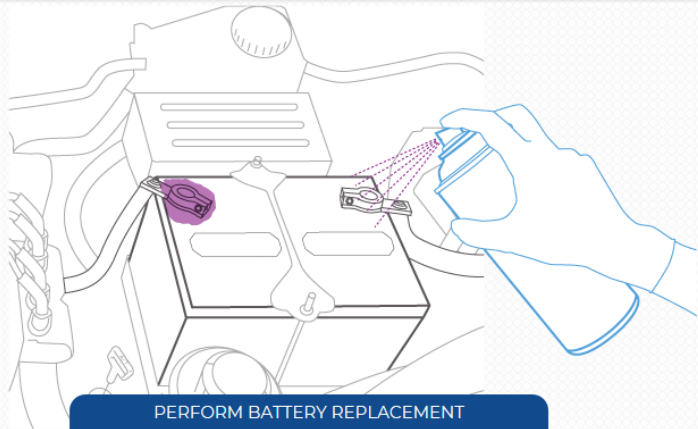


PERFORM BATTERY REPLACEMENT

- 1 2 3 4 5 6 7 8 9 10 11 12 13 14 15 16 17 18 19 20 21 22 23 24 25
- 26 27 28 29 30 31 32

STEP 23:

Remove the memory saver.



PERFORM BATTERY REPLACEMENT

- 1 2 3 4 5 6 7 8 9 10 11 12 13 14 15 16 17 18 19 20 21 22 23 24 25
- 26 27 28 29 30 31 32

STEP 24:

Spray the terminals with sealer.



CALL OUT:

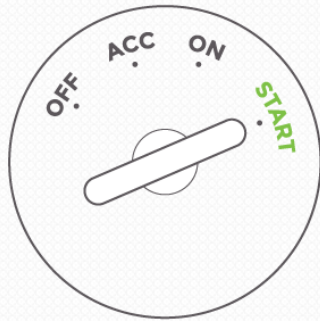
Clear for
zoom, Bay _!

PERFORM BATTERY REPLACEMENT

- 1 2 3 4 5 6 7 8 9 10 11 12 13 14 15 16 17 18 19 20 21 22 23 24 25
- 26 27 28 29 30 31 32

STEP 25:

CALL OUT: "Clear for zoom, Bay ___!"

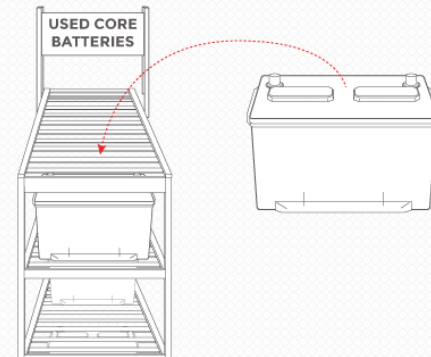


PERFORM BATTERY REPLACEMENT

- 1 2 3 4 5 6 7 8 9 10 11 12 13 14 15 16 17 18 19 20 21 22 23 24 25
- 26 27 28 29 30 31 32

STEP 26:

Start the vehicle and check for proper operation.

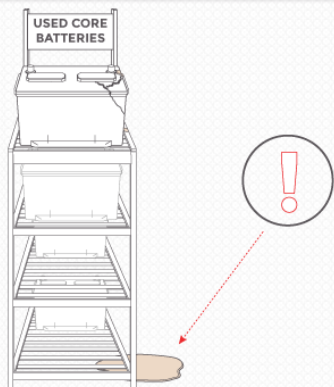


PERFORM BATTERY REPLACEMENT

- 1 2 3 4 5 6 7 8 9 10 11 12 13 14 15 16 17 18 19 20 21 22 23 24 25
- 26 27 28 29 30 31 32

STEP 27:

Place the old battery (core) on the core rack.



PERFORM BATTERY REPLACEMENT

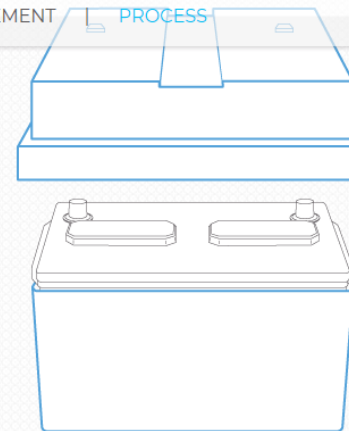
- 1 2 3 4 5 6 7 8 9 10 11 12 13 14 15 16 17 18 19 20 21 22 23 24 25
- 26 27 28 29 30 31 32

STEP 28:

Visually inspect the core rack area for leaks, and clean any leaks following the correct procedure.



MINNESOTA
RESIDENTS
ONLY



PERFORM BATTERY REPLACEMENT

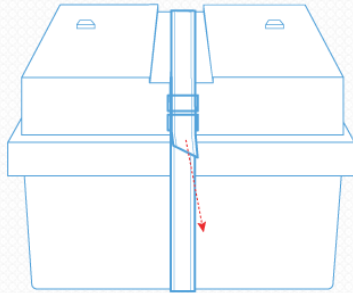
- 1 2 3 4 5 6 7 8 9 10 11 12 13 14 15 16 17 18 19 20 21 22 23 24 25
- 26 27 28 29 30 31 32

STEP 29:

Place the core in the battery box.



**MINNESOTA
RESIDENTS
ONLY**



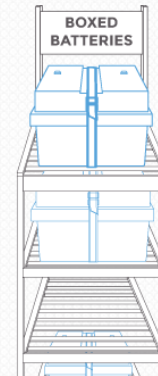
PERFORM BATTERY REPLACEMENT

- 1 2 3 4 5 6 7 8 9 10 11 12 13 14 15 16 17 18 19 20 21 22 23 24 25
- 26 27 28 29 30 31 32

STEP 30:
Secure the lid.



**MINNESOTA
RESIDENTS
ONLY**



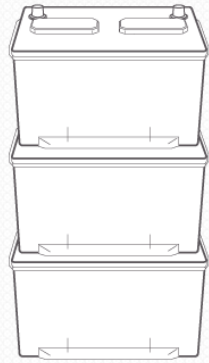
PERFORM BATTERY REPLACEMENT

- 1 2 3 4 5 6 7 8 9 10 11 12 13 14 15 16 17 18 19 20 21 22 23 24 25
- 26 27 28 29 30 31 32

STEP 31:
Place battery box on the rack.



MINNESOTA
RESIDENTS
ONLY



PERFORM BATTERY REPLACEMENT

- 1 2 3 4 5 6 7 8 9 10 11 12 13 14 15 16 17 18 19 20 21 22 23 24 25
- 26 27 28 29 30 31 32

STEP 32:

At core pick-up, remove the cores from the battery boxes and stack the boxes for reuse.



This Battery Process Check will examine your knowledge of the steps required to perform a battery replacement. You will determine the order of the steps presented.

GOOD LUCK, AND WHEN YOU ARE READY. CLICK GET STARTED!

GET STARTED





Click on the steps listed to the left and drag them into the correct order on the right. Then click Next to continue.

- ✓ Step 6 Verify that all battery loads are OFF.
- ✓ Step 7 Inspect condition of battery terminals and hold down.
- ✓ Step 8 Determine type of battery.
- ✓ Step 9 Install the memory saver.
- ✓ Step 10 Remove battery terminals - REMOVE NEGATIVE TERMINAL FIRST.



GREAT WORK!
Click Next to continue.



Click on the steps listed to the left and drag them into the correct order on the right. Then click Next to continue.

- ✓ Step 1 Ensure driver's side window is open.
- ✓ Step 2 Retest the battery and perform a system test.
- ✓ Step 3 Verify that the proper battery is in stock.
- ✓ Step 4 CALL OUT: "Battery Service, Bay ___!"
- ✓ Step 5 Use only approved battery tools during the service.



GREAT WORK!
Click Next to continue.